



CANTINA
SETTECANI
FONDATA NEL 1923



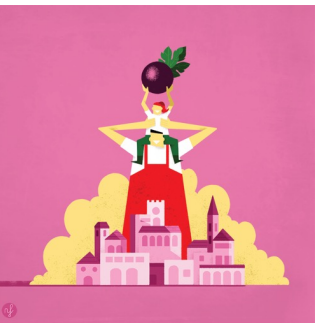
**GUARANTEED AND
TRANSPARENT
SUSTAINABILITY**
Practicing Organic.



**WINEYARD
BIODIVERSITY**
Encourage
settlement of insect
pollinators through
the grassing of the
vineyard during all
the vegetative
phases.



**TERRITORY
PROTECTION**
Safeguard and
maintenance historic
vineyards and
territory.



**SOCIAL
COMMITMENT**
Development
projects in favor of
the community with
the goal of doing
business in a shared
and inclusive way.



**TRADITION,
RESEARCH AND
SUSTAINABILITY**
Be aware of the
impact generated by
own business in order
to implement
sustainable actions
aimed at preserving
the territory and its
history, for the future
generations.



**REDUCE – REUSE –
RECYCLE**
Giving impulse to the
circular economy by
adhering to projects
aimed at reducing
the waste produced
and choosing
packaging and
packing material that
respects the
environment.

Cantina Settecani Italy, Emilia Romagna



Cantina Settecani

They were 48 farmers who founded the Cantina Settecani in 1923, today they are 200.

A shared vision that has shaped the future decades thanks to a passionate work. A winery in the heart of Lambrusco Grasparossa's territory, located in the hamlet of Settecani, on the border of the towns of Castelvetro, Castelnovo Rangone and Spilamberto.





OUR WINES:





Cantina Settecani Lambrusco Grasparossa di Castelvetro SECCO

100% Lambrusco Grapes

The vineyard is located in Castelvetro in Emilia Romagna.

A Lambrusco with a ruby deep red color with violet hues, intense fruity scent.

Good and persistent body, pleasantly velvety and enveloping.

This wine pairs perfectly with tasty Italian first and second courses.



Cantina Settecani Lambrusco Grasparossa di Castelvetro SEMISECCO

100% Lambrusco Grapes

The vineyard is located in Castelvetro in Emilia Romagna.

Deep red color with violet hues and sparkling fragrance.

Full flavored and balanced, pleasantly cool and enveloping.

This wine is suitable during all the meal, particular with tasty dishes.

Product Information:

Winery	Wine	Vintage	Case size
Cantina Settecani	Lambrusco Grasparossa dei Castelvetro SECCO	NV	750/12
Cantina Settecani	Lambrusco Grasparossa dei Castelvetro SEMISECCO	NV	750/12

